

The Holly

 4 BEDROOMS  3 BATHROOMS  1,569 FT²

The Holly is a spacious 4-bedroom home with integral garage and flexible living accommodation.

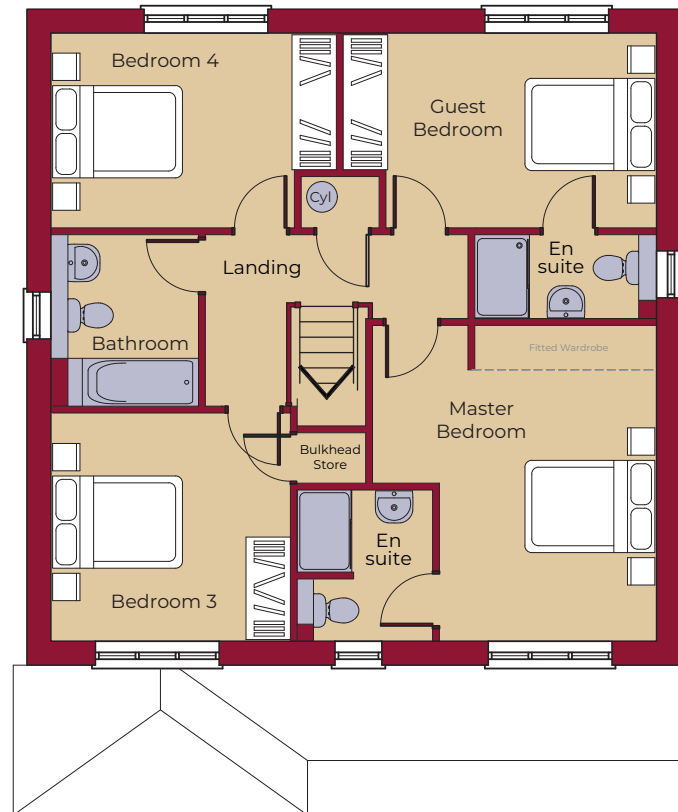
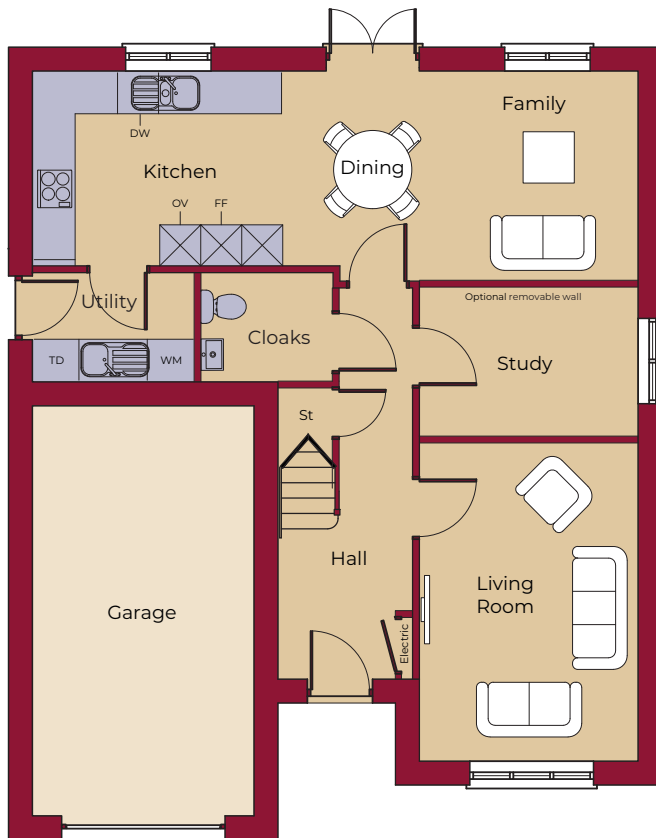
The ground floor accommodation comprises of a lounge and a study for home working. The kitchen / family room at the rear of the property has French doors opening onto the garden. A practical utility room with space for a washer and a dryer, and cloakroom complete the ground floor.

Upstairs, there are four double bedrooms, two of which are en suite, and a family bathroom. The master bedroom has Hammonds fitted wardrobes.



The Holly

4 BEDROOMS 3 BATHROOMS 1,569 FT²



GROUND FLOOR

LIVING ROOM	4615mm x 3150mm 15' 2" x 10' 4"
KITCHEN	3675mm x 2800mm 12' 1" x 9' 2"
FAMILY / DINING	5110mm x 3025mm (max) 16' 9" x 9' 11" (max)
STUDY	3150mm x 2165mm 10' 4" x 7' 1"
UTILITY	2340mm x 1550mm 7' 8" x 5' 1"
GARAGE	6000mm x 3240mm 19' 8" x 10' 8"

FIRST FLOOR

MASTER BED	4595mm (max)(inc. 'robes) x 4130mm (max) 15' 1" (max)(inc. 'robes) x 13' 7" (max)
MASTER EN SUITE	2185mm x 1980mm (max) 7' 2" x 6' 6" (max)
GUEST BEDROOM	4555mm (max) x 2825mm 14' 11" (max) x 9' 3"
GUEST EN SUITE	2635mm (max) x 1215mm 8' 8" (max) x 4' 0"
BEDROOM 3	3480mm x 3315mm 11' 5" x 10' 11"
BEDROOM 4	4150mm (max) x 2825mm 13' 7" (max) x 9' 3"
BATHROOM	2510mm x 2135mm (max) 8' 3" x 7' 0" (max)

KEY



Hob

OV Oven

FF Fridge / Freezer

DW Dishwasher

WM Washing Machine Space

TD Tumble Dryer Space

St Store