

The Hazel 2 5

4 BEDROOMS 2 BATHROOMS 1,259 FT²

The Hazel is a lovely 4-bedroom detached home with open-plan kitchen / diner.

On the ground floor, this home offers a separate lounge, and an open plan family / kitchen / dining area. A utility room leads off this, with space for both a washer and dryer, and a cloakroom with vanity unit completes the ground floor.

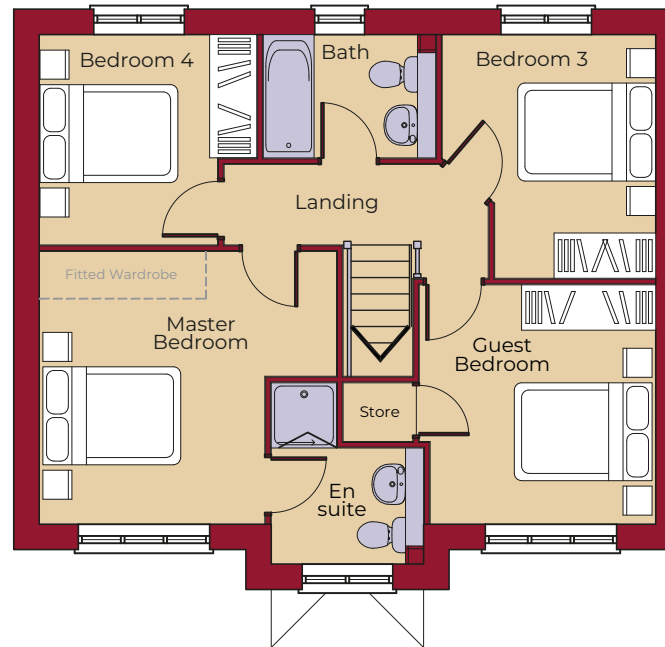
Upstairs there are four double bedrooms and a family bathroom. The master bedroom is en suite and has Hammonds fitted wardrobes.



Computer generated images are for illustrative purposes only. Elevations, landscaping and boundary treatments may differ from shown.

The Hazel 2 5

4 BEDROOMS 2 BATHROOMS 1,259 FT²



GROUND FLOOR

LIVING ROOM	4735mm x 3200mm 15' 6" x 10' 6"
KITCHEN	3655mm x 3095mm 12' 0" x 10' 2"
FAMILY / DINING	5100mm x 3055mm 16' 9" x 10' 0"
UTILITY	1875mm x 1655mm 6' 2" x 5' 5"

FIRST FLOOR

MASTER BEDROOM	4075mm (max) x 3735mm (inc. 'robes) 13' 4" (max) x 12' 3" (inc. 'robes)
MASTER EN SUITE	2475mm (max) x 2060mm 8' 1" (max) x 6' 9"
GUEST BEDROOM	3275mm x 3230mm (max) 10' 9" x 10' 7" (max)
BEDROOM 3	3335mm x 2915mm (max) 10' 11" x 9' 7" (max)
BEDROOM 4	2960mm (max) x 2875mm 9' 9" (max) x 9' 5"
BATHROOM	2375mm (max) x 1675mm 7' 10" (max) x 5' 6"

KEY



Hob

OV Oven

FF Fridge / Freezer

DW Dishwasher

WM Washing Machine Space

TD Tumble Dryer Space

St Store