

The Copper Beech

3 BEDROOMS 2 BATHROOMS 997 FT²

The Copper Beech is a thoughtfully designed three-bedroom home, combining comfort and practicality with modern touches throughout.

The ground floor features a contemporary kitchen with dining area, a good-sized living room ideal for everyday living, and a combined cloakroom and utility room for added convenience.

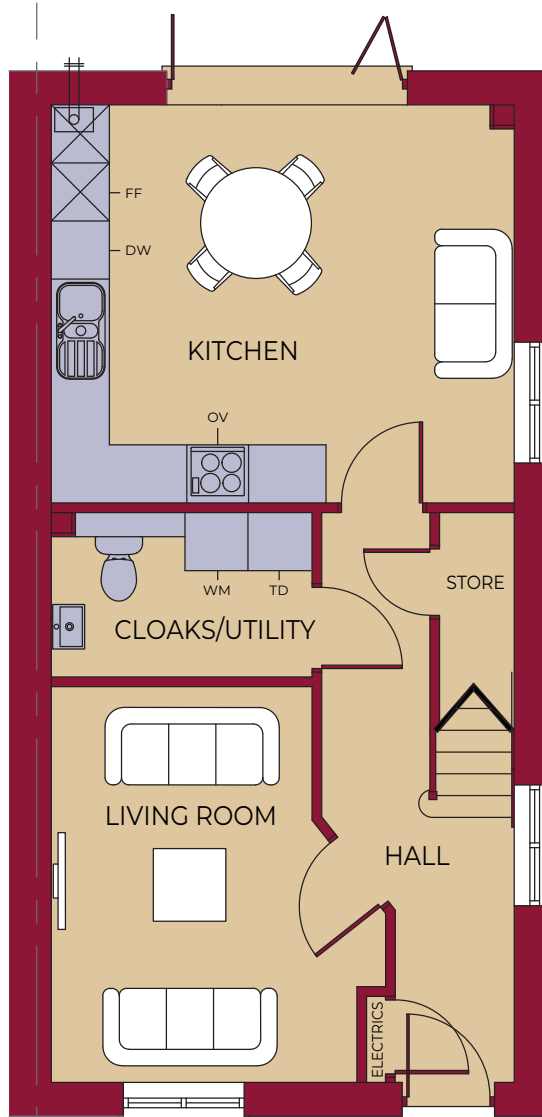
Upstairs, the master bedroom offers a peaceful retreat with an en suite, accompanied by two further bedrooms and a stylish family bathroom. Outside, the home benefits from allocated parking spaces and a garden complete with shed - ideal for storage.

The Copper Beech is a well-balanced, versatile home suited to a range of lifestyles.



The Copper Beech

3 BEDROOMS 2 BATHROOMS 997 FT²



GROUND FLOOR

LIVING ROOM	4060mm x 3140mm (max) 13' 4" x 10' 4" (max)
KITCHEN / DINING	4730mm x 4085mm 15' 6" x 13' 5"
UTILITY / CLOAKS	2670mm x 1700mm 8' 9" x 5' 7"

FIRST FLOOR

MASTER BEDROOM	4040mm (max)(inc. 'robes) x 3130mm 13' 3" (max)(inc. 'robes) x 10' 3"
MASTER EN SUITE	2700mm (max) x 1495mm 8' 10" (max) x 4' 11"
GUEST BEDROOM	3055mm x 2485mm 10' 0" x 8' 2"
BEDROOM 3	2140mm x 2035mm 7' 0" x 6' 8"
BATHROOM	2725mm x 1935mm 8' 11" x 6' 4"

KEY



Hob

OV Oven

FF Fridge / Freezer

DW Dishwasher

WM Washing Machine Space

TD Tumble Dryer Space

St Store