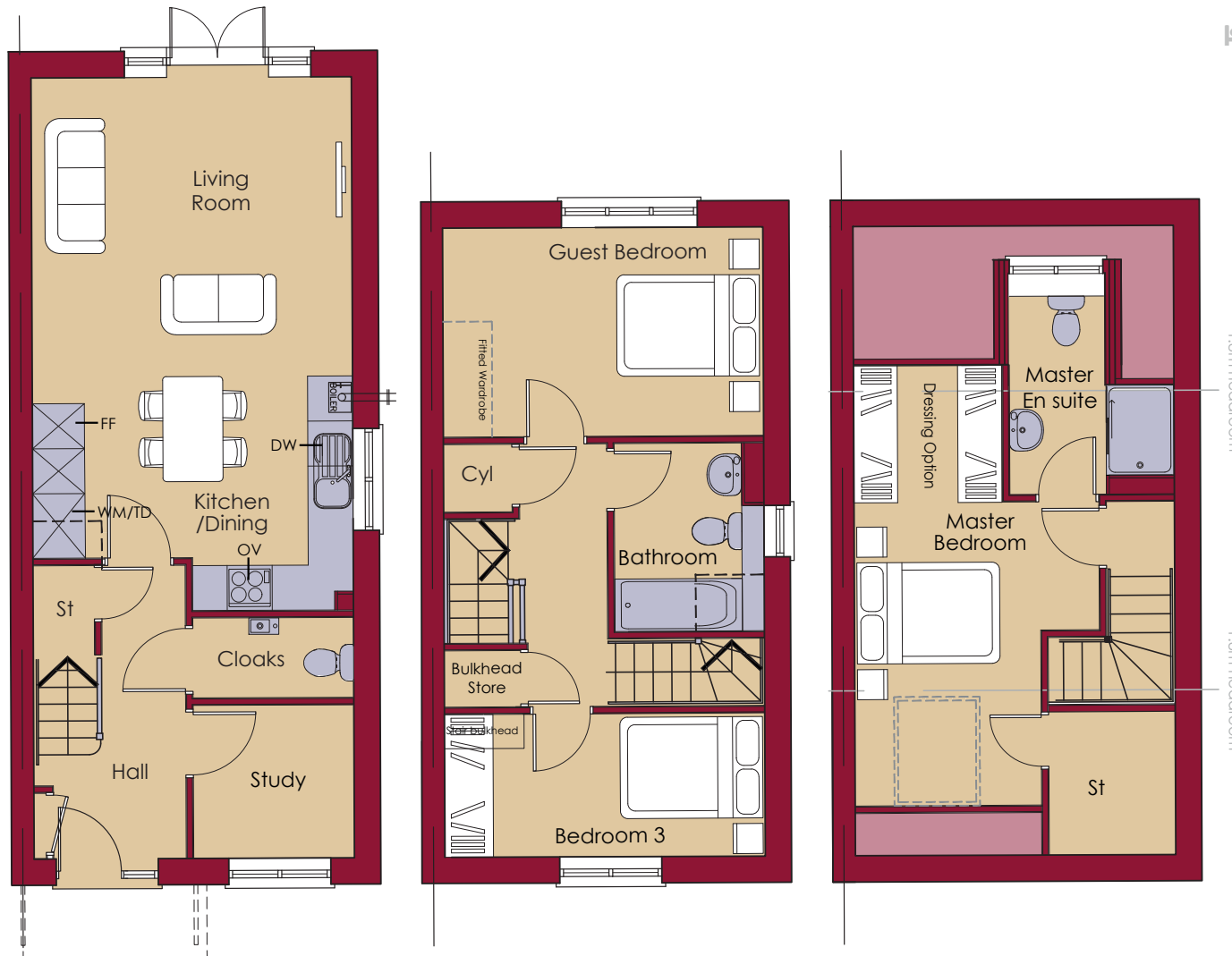


The Blackthorn

3 BEDROOMS 2 BATHROOMS 1,032 FT²



GROUND FLOOR

| | |
|------------------|---|
| LIVING AREA | 4220mm x 3950mm 13' 10" x 13' 0" |
| KITCHEN / DINING | 4220mm x 3105mm (max) 13' 10" x 10' 2" (max) |
| STUDY | 2115mm x 2010mm 6' 11" x 6' 7" |

FIRST FLOOR

| | |
|---------------|--|
| GUEST BEDROOM | 4220mm x 2760mm 13' 10" x 9' 1" |
| BEDROOM 3 | 4220mm x 1880mm 13' 10" x 6' 2" |
| BATHROOM | 2505mm x 1965mm (max) 8' 3" x 6' 5" (max) |

SECOND FLOOR

| | |
|-----------------|--|
| MASTER BEDROOM | 5865mm (max) x 3235mm (max) 19' 3" (max) x 10' 7" (max) |
| MASTER EN SUITE | 2815mm (max) x 2165mm (max) 9' 3" (max) x 7' 1" (max) |

KEY

| | | | |
|--|---------------------|--------------------------|-----------------------|
| | OV Oven | DW Dishwasher | TD Tumble Dryer Space |
| | FF Fridge / Freezer | WM Washing Machine Space | St Store |

The floorplans are indicative only and may vary due to the position on the development. All dimensions are approximate. Square footage excludes garage. Furthermore, all furniture shown is to provide a sense of scale, is indicative only and not included. For detailed plans and specifications please contact Archway Homes Ltd.