

The Poplar

 4 BEDROOMS  3 BATHROOMS  1,443 FT²

The Poplar is an attractive 4-bedroom detached home with a thoughtfully designed layout which will appeal to families.

You can enjoy a kitchen, family dining room with French doors opening onto the garden, a separate living room with front-aspect bay window, as well as a practical cloakroom, utility room with space for a washer and a dryer and an integral garage.

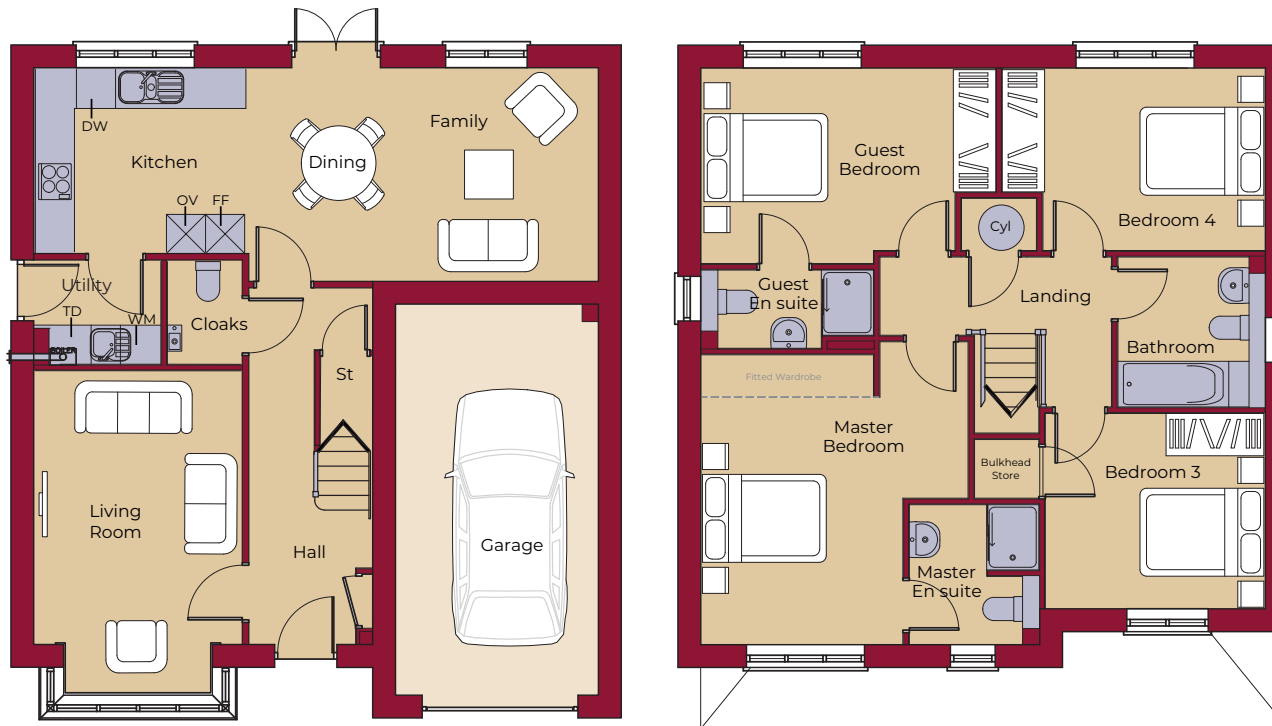
Upstairs features four spacious bedrooms, two of which are en suite. A family bathroom completes the floor. The master bedroom has Hammonds fitted wardrobes.



Computer generated images are for illustrative purposes only. Elevations, landscaping and boundary treatments may differ from shown.

The Poplar

4 BEDROOMS 3 BATHROOMS 1,443 FT²



KEY			
	OV Oven	DW Dishwasher	TD Tumble Dryer Space
	FF Fridge / Freezer	WM Washing Machine Space	St Store

DOWNSTAIRS

LIVING ROOM	4950mm (max) x 3150mm 16' 3" (max) x 10' 4"
KITCHEN	3235mm x 2800mm 10' 7" x 9' 2"
FAMILY / DINING	5325mm x 3225mm 17' 6" x 10' 7"
UTILITY	1925mm (max) x 1570mm 6' 4" (max) x 5' 2"
GARAGE	5950mm x 3060mm 19' 6" x 10' 0"

UPSTAIRS

MASTER BED	4420mm (max)(inc. 'robes) x 4075mm (max) 14' 6" (max)(inc. 'robes) x 13' 4" (max)
MASTER EN SUITE	2125mm x 1985mm (max) 7' 0" x 6' 6" (max)
GUEST BEDROOM	4500mm (max) x 2975mm (max) 14' 9" (max) x 9' 9" (max)
GUEST EN SUITE	2625mm (max) x 1200mm 8' 7" (max) x 3' 11"
BEDROOM 3	3350mm x 2970mm 11' 0" x 9' 9"
BEDROOM 4	4010mm (max) x 2775mm 13' 2" (max) x 9' 1"
BATHROOM	2300mm x 2235mm (max) 7' 7" x 7' 4" (max)