

The Elderberry

 4 BEDROOMS  2 BATHROOMS  1,218 FT²

As a starter size 4 bedroom detached home, the Elderberry has it all.

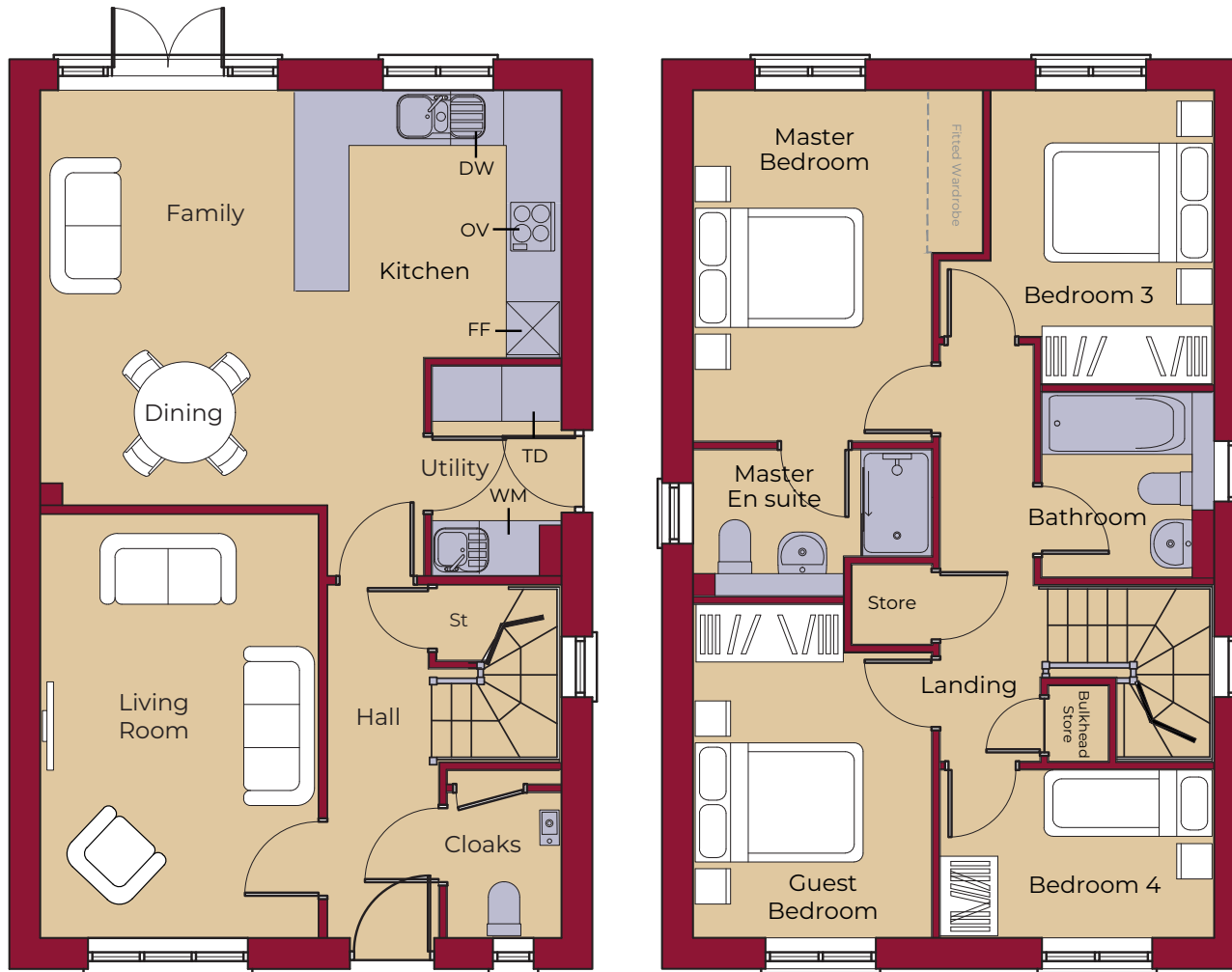
A wonderful kitchen family room with French doors onto the garden, a utility room with space for a washer and a dryer, a living room and cloakroom make up the ground floor. A turned staircase leads to the first floor bedrooms, where the master is en suite and has Hammonds fitted wardrobes.

Externally there is driveway parking and a garden shed.



The Elderberry

4 BEDROOMS 2 BATHROOMS 1,218 FT²



DOWNSTAIRS

LIVING ROOM	4750mm x 3100mm 15' 7" x 10' 2"
KITCHEN	2965mm x 3000mm 9' 9" x 9' 10"
FAMILY / DINING	4650mm x 4310mm (max) 15' 3" x 14' 2" (max)
UTILITY	2345mm x 1435mm 7' 8" x 4' 8"

UPSTAIRS

MASTER BEDROOM	3945mm x 3250mm (max)(inc. 'robes) 12' 11" x 10' 8" (max)(inc. 'robes)
MASTER EN SUITE	2675mm (max) x 1650mm (max) 8' 9" (max) x 5' 5" (max)
GUEST BEDROOM	3745mm (max) x 2675mm 12' 3" (max) x 8' 9"
BEDROOM 3	3295mm (max) x 2500mm 10' 10" (max) x 8' 2"
BEDROOM 4	3095mm x 1870mm 10' 2" x 6' 2"
BATHROOM	2085mm x 1925mm (max) 6' 10" x 6' 4" (max)

KEY



Hob

OV Oven

FF Fridge / Freezer

DW Dishwasher

WM Washing Machine Space

TD Tumble Dryer Space

St Store