

The Acer

 3 BEDROOMS  1 BATHROOM  800 FT²

The Acer is a 3-bedroom semi-detached home with driveway parking.

Downstairs offers a kitchen with dining space, a good sized living room and cloakroom.

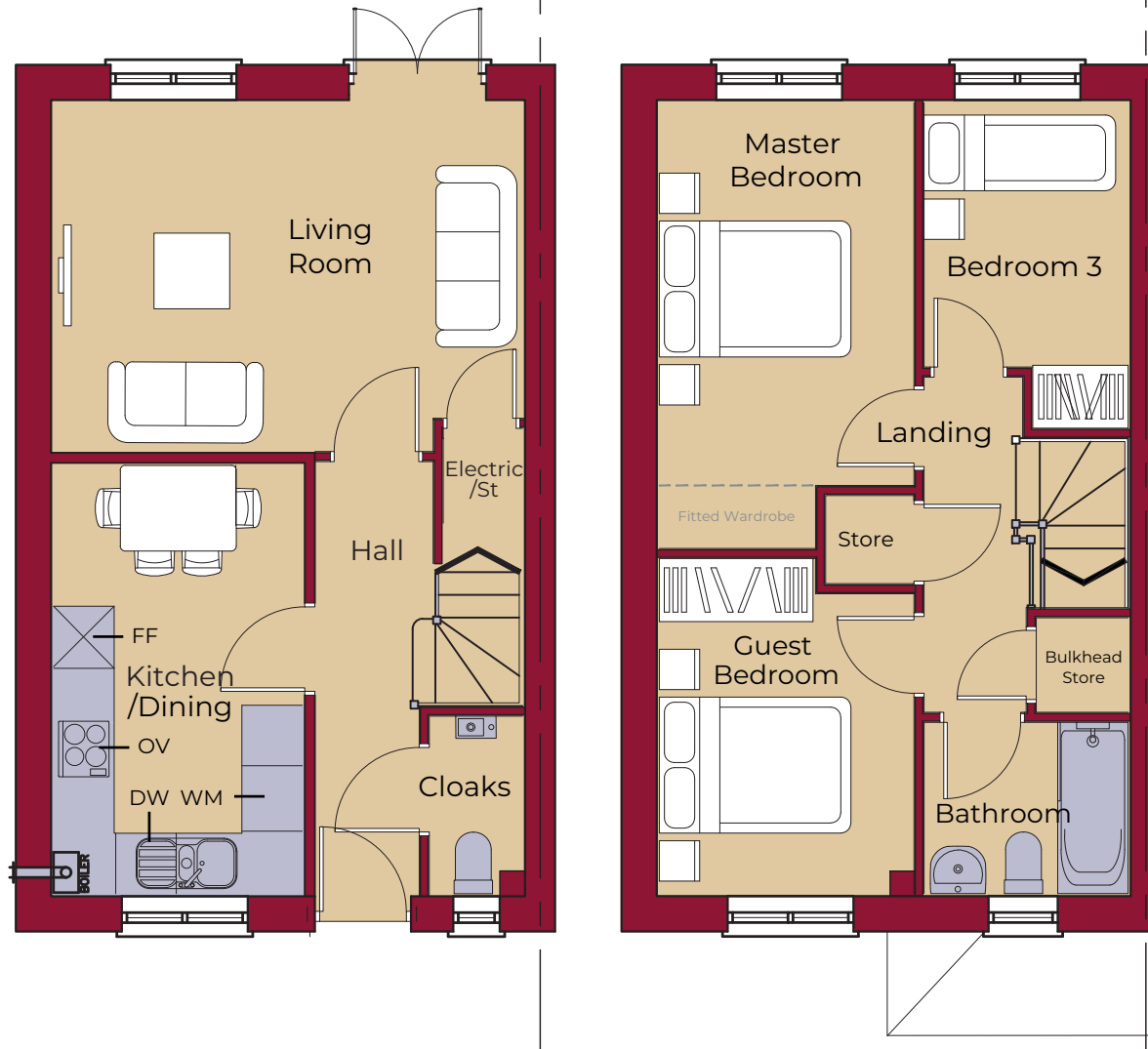
Upstairs the master bedroom is fitted with Hammonds wardrobes, there are two further bedrooms and a family bathroom.

Externally there is driveway parking and a garden shed.



The Acer

3 BEDROOMS 1 BATHROOM 800 FT²



KEY			
	OV Oven	DW Dishwasher	TD Tumble Dryer Space
	FF Fridge / Freezer	WM Washing Machine Space	St Store

DOWNSTAIRS

LIVING ROOM	4650mm x 3450mm 15' 3" x 11' 4"
KITCHEN / DINING	4250mm x 2465mm 13' 11" x 8' 1"

UPSTAIRS

MASTER BEDROOM	4425mm (inc. wardrobes) x 2525mm 14' 6" (inc. wardrobes) x 8' 3"
GUEST BEDROOM	3320mm x 2525mm 10' 11" x 8' 3"
BEDROOM 3	3230mm (max) x 2025mm 10' 7" (max) x 6' 8"
BATHROOM	2025mm x 1700mm 6' 8" x 5' 7"